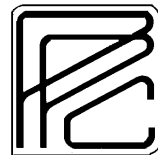


The Pinellas Planning Council's  
Annual Report for Fiscal Year 1999-2000



# YOUR PINELLAS PLANNING COUNCIL REPRESENTATIVES

Chairman



Councilmember  
Robert A. Kersteen  
City of St. Petersburg

Vice-Chairman



Mayor  
Thomas De Cesare  
Group A Communities

Treasurer



Councilmember  
Chuck Williams  
City of Pinellas Park

Secretary



Vice-Mayor  
Nadine Nickeson  
City of Safety Harbor



School Board Member  
Lee Benjamin  
Pinellas County  
School District



Mayor  
Frank DiDonato, DC  
City of Tarpon  
Springs



Mayor  
Robert DiNicola  
Group B Communities



Commissioner  
Calvin D. Harris  
Pinellas County



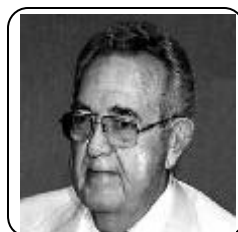
Commissioner  
Ed Hart  
City of Clearwater



Commissioner  
Janet Henderson  
City of Dunedin



Mayor  
Robert Jackson  
City of Largo



Mayor  
William B. Smith  
Group C Communities



Councilmember  
David Tilki  
City of Oldsmar

Group A Communities: Madeira Beach, St. Pete Beach, and Treasure Island

Group B Communities: Belleair Shore, Belleair Beach, Indian Rocks Beach, Indian Shores, North Redington Beach, Redington Beach, and Redington Shores

Group C Communities: Belleair, Belleair Bluffs, Gulfport, Kenneth City, Seminole, and South Pasadena

### To the Citizens of Pinellas County,



It has been both an honor and a privilege to serve as Chairman this past year, during which time the Council has been engaged in several important projects that derived from the Strategic Plan we approved in the preceding year, which Plan serves to provide overall direction to the efforts of the Council.

Over the past twelve months the Council has been instrumental in successfully completing a major initiative to improve the voluntary annexation process through the amendment of the County Charter that was approved by the electorate in November, 2000. The resultant procedure and map will serve to guide voluntary annexation and service delivery in a more predictable and efficient manner in the years ahead.

While completing this important work related to annexation, the Council also initiated a multi-step process to examine redevelopment opportunities and issues countywide. This joint effort, undertaken in collaboration with the Pinellas County Economic Development Department, is designed to facilitate the redevelopment process that will be important to the continued economic well-being of Pinellas County.

Further, the Council has continued to provide extensive technical and grant assistance to our member local governments, implemented streamlined land use plan amendment procedures, administered the Countywide Future Land Use Plan, and embarked on the comprehensive update of our Countywide Plan.

These efforts are directed at providing a well thought-out and improved future for all of Pinellas County by fostering coordination and cooperation among our member local governments, the school district and the citizens we serve. With the continued commitment of all parties, the Council will be successful in this endeavor.

Sincerely,

## **PINELLAS PLANNING COUNCIL AND THE COUNTYWIDE PLANNING PROCESS**

---

The countywide planning process, based upon a Special Act of the State Legislature (Chapter 88-464, Laws of Florida, as amended) and approved by referendum as an amendment to the Pinellas County Charter, was established to guide the growth and improvement of Pinellas County as a whole, with the participation of the County's member local governments and the School Board.

The Pinellas Planning Council (PPC) is comprised of thirteen elected officials who provide representation for each of the 25 local governments within Pinellas County and the Pinellas County School District. The PPC serves in an advisory role to the Countywide Planning Authority for the purpose of formulating and administering a coherent countywide planning process that overcomes the inherent limitations of 25 separate local government plans, while respecting the prerogatives and individual character of each local government as set forth in their local plans.

The Countywide Plan and accompanying Rules have been adopted to assist in the countywide planning process. The following depicts the organizational framework of the strategic planning process that is used to formulate and administer the Countywide Plan and Rules:

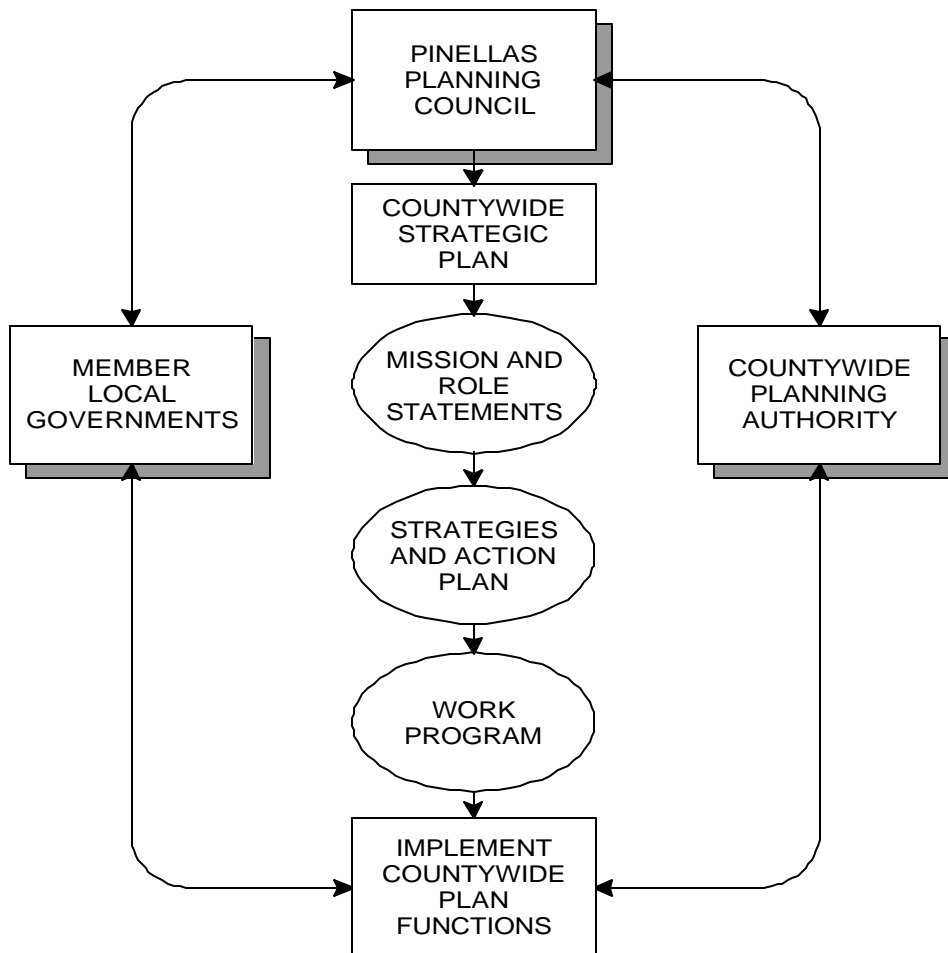
## THE COUNTYWIDE PLANNING AUTHORITY

---

The Pinellas County Board of County Commissioners serves as the Countywide Planning Authority (CPA) for Pinellas County as provided for in the Special Act and the County Charter. The County Commissioners, in their capacity as the CPA, serve as the final decision-making body in the adoption and administration of the Countywide Plan so as to encourage a coherent countywide planning process for the overall benefit of Pinellas County.

During the 1999-2000 fiscal year, the CPA acted on 41 amendments to the Countywide Future Land Use Plan Map, and adopted amendments to the Countywide Rules to provide for a streamlined plan amendment process.

County Commissioner Calvin D. Harris served as the Pinellas County representative on the PPC for the past year and was an effective liaison between the PPC and the CPA, including actively participating in the development of the recommendations to “streamline” the plan amendment process, and the new procedures dealing with voluntary annexations in Pinellas County.



## THE CPA



Commissioner Robert B. Stewart, Chairman  
Commissioner Calvin D. Harris, Vice-Chairman  
Commissioner Sallie Parks  
Commissioner Karen Williams Seel  
Commissioner Barbara Sheen Todd

## **THE PLANNERS ADVISORY COMMITTEE**

---

The Planners Advisory Committee (PAC) provides technical input and makes recommendations on matters before the Council. The PAC is comprised of the directors of the various local government planning departments, or other selected representatives, and meets with Council staff on a regular basis to review items being brought to the Council. The PAC is an additional source of professional input to the decision-making process.

A major part of the PAC effort this past year included the review of: (1) land use plan amendments to maintain consistency with the Countywide Plan; (2) amendments to the Countywide Plan Rules; and (3) special work program items such as the new annexation process intended to improve the way voluntary annexation occurs in Pinellas County.

Other special projects that the PAC addressed this year include implementation of the Council's "streamlining" report recommendations designed to improve the way land use plan amendments are considered.

Ron Rinzivillo, Planner for the City of Safety Harbor, served as Chairman of the PAC, and Walter Fufidio, Planning and Zoning Director for the City of Tarpon Springs, served as Vice-Chairman during 2000.

### **THE PAC**



Pictured: Jeff Dow, Dunedin; Tom Shevlin, Pinellas Park; Gordon Beardslee, Pinellas County; Rick MacAulay, St. Petersburg; Jim Miller, Pinellas County School District; Nick Staszko, Oldsmar; and Mike Nadeau, Indian Shores.

Not present for picture: Walter Fufidio, Tarpon Springs; Ron Rinzivillo, Safety Harbor; Rick Goss, Largo; Cindi Harden, Clearwater; Mitch Bobowski, Seminole; Richard Kephart, Gulfport; Tom Brobeil, Indian Rocks Beach; Chris Brimo, St. Pete Beach; Lynn Rosetti, Treasure Island.

## **PINELLAS PLANNING COUNCIL**

---

### **FUNCTIONS AND ACCOMPLISHMENTS**

The countywide planning program, as administered by the PPC, is designed to promote a consistent, coordinated, and efficient countywide approach to planning and development in Pinellas County with local, regional, and state government entities.

The work the Council undertook during fiscal year 1999-2000 represented the first year of a new five-year cycle that reflects the strategic planning process the Council completed the previous year. This planning process involved review of the Council's Mission and Role statements and preparation of goals and objectives, in conjunction with the Countywide Planning Authority, resulting in the Council's Strategic Plan. The Council's annual and five-year work programs are derived from this Strategic Plan.

Fiscal year 1999-2000 work was organized around three major functions. The major functions and the highlights of the work completed within each function are described below.

**Plan Initiatives and Implementation** - This Council function deals with administering, updating, and implementing the Countywide Comprehensive Plan. Key duties and accomplishments during the past year included:

- C Maintenance and administration of the Countywide Future Land Use Plan Map, including: processing amendment requests, updating the map, and coordination of boundary adjustments on an annual basis;
- C Coordination with local governments to maintain consistency between local plans and land development regulations with the Countywide Rules;
- C The administration and amendment of the Countywide Rules;
- C Review of all annexations greater than ten acres in size for the local government's ability to serve the annexed area, and review of the involuntary annexation of existing enclaves less than one acre in size (based on Chapter 98-484, Laws of Florida);
- C Implementation of the "streamlining" recommendations pertaining to the Countywide Plan map amendment process; and
- C Continuation of work on an updated and consolidated Countywide Plan that supercedes the current plan and focuses on countywide priorities, including redevelopment objectives.

## **PINELLAS PLANNING COUNCIL**

---

### **FUNCTIONS AND ACCOMPLISHMENTS (CONTINUED)**

**Intergovernmental Coordination and Assistance** - This Council function deals with coordinating the countywide planning process with local, regional, and state entities, as well as providing technical assistance to local governments. Key duties and accomplishments included:

- C Pursuit and implementation of the comprehensive approach to annexation advanced by the Council. This included development of a new approach to voluntary annexation that replaced the provisions in state law with specific procedures tailored to Pinellas County as authorized by amendment of the Pinellas County Charter;
- C Initiation of a joint redevelopment issues study in partnership with the County's Economic Development Department. The initial phase of this project is designed to identify redevelopment opportunities and issues and is being coordinated with a steering committee comprised of elected officials and development industry representatives;
- C Development and coordination of reports for five local governments that identify land development regulatory changes necessary to achieve consistency with each government's comprehensive plan, including preparation in ordinance form for adoption by the local governments;
- C Preparation of grant applications for Belleair Bluffs (Florida Recreational Development Assistance Program), North Redington Beach (Coastal Partnerships Initiative Program), and Kenneth City (Emergency Management Preparedness and Assistance Fund); and
- C Examination of and reports on site plan, variance, and miscellaneous local code issues, as well as preparation of land development code amendments, such as the ones needed to implement the recommendations of the Indian Shores Town Square Plan.

## **PINELLAS PLANNING COUNCIL**

---

### FUNCTIONS AND ACCOMPLISHMENTS (CONTINUED)

**Administration** - Key items related to this Council function include:

- C Overseeing the day-to-day operations of the Council, including personnel, budget, financial and audit functions, as well as the personal computer network;
- C Preparation and coordination of the Council, Planners Advisory Committee, and Countywide Planning Authority notices, agendas, and public meeting requirements;
- C Development and maintenance of the Council's new web-site;
- C Coordination and update of the Council's Strategic Plan, Five-Year Work Program, and Annual Work Program; and
- C Responsibility for overall coordination of the Council's efforts with the member local governments and the Countywide Planning Authority.

## 1999-2000 YEAR-END FINANCIAL STATEMENT

The PPC's operating budget is prepared annually by the Executive Director, reviewed and approved by the Council, and adopted by the Pinellas County Board of County Commissioners. Copies of the proposed and adopted budget are forwarded to each local government. The budget is funded by an ad valorem tax based on a millage rate applied countywide. The 1999-2000 fiscal year millage rate was .0225. The 1999-2000 year-end general purpose financial statement is shown below:

	<u>General Fund</u>	
	<u>2000</u>	<u>1999</u>
<b>REVENUE:</b>		
Pinellas County property taxes	\$801,734	\$728,842
Interest	34,155	23,600
Contract services	<u>37,596</u>	<u>54,389</u>
Total revenue	<u>\$873,485</u>	<u>\$806,831</u>
<b>EXPENDITURES:</b>		
Payroll, taxes, and benefits	\$551,561	\$513,534
Contractual support services	72,670	50,960
Legal services	484	225
Rent	74,431	56,909
Equipment and furnishings	25,018	25,159
Telephone	2,633	5,300
Mail	5,690	6,656
Advertising notice	5,316	4,339
Printing and reproduction	16,041	13,174
Office supplies and materials	7,952	7,698
Property appraiser and tax collector commissions	21,473	22,318
Travel	2,827	3,484
Reference and education	6,718	5,750
Accounting and audit	5,537	5,442
Local government grants	12,000	10,000
Miscellaneous	<u>1,423</u>	<u>3,378</u>
Total expenditures	<u>\$811,774</u>	<u>\$734,336</u>
REVENUES OVER (UNDER) EXPENDITURES	61,711	72,495
FUND BALANCE, OCTOBER 1	<u>361,620</u>	<u>\$289,125</u>
FUND BALANCE, SEPTEMBER 30	<u>\$423,331</u>	<u>\$361,620</u>

## **THE YEAR IN REVIEW AND A LOOK AHEAD TO 2001**

**T**he Council can be credited with a number of significant accomplishments during fiscal year 1999-2000, including:

- C Successful preparation and implementation of legislation leading to the amendment of the Pinellas County Charter to provide for an exclusive process to govern voluntary annexation;
- C Initiation of the first phase of an examination of redevelopment issues, including identification of those that are considered significant impediments to a more consistent and efficient development/redevelopment process throughout the county;
- C Implementation of the “streamlining” amendments to the Countywide Rules to expedite and simplify the plan map amendment process;
- C Initiation of an updated and consolidated Countywide Plan that will supercede the current plan and that will focus on countywide priorities, including redevelopment objectives; and
- C Completion of the Council’s web-site providing wider and more efficient distribution of information concerning the Council and the Countywide Planning Authority.

**L**ooking ahead to fiscal year 2000-2001, the second year of the Council’s five-year work program, the following major work items are anticipated:

- C Completion of a preliminary draft of a consolidated Countywide Plan, and initiation of the second phase of this effort to include approval of recommendations and identification of implementation strategies;
- C Continuation of the redevelopment issues project, including the identification and approval of preferred courses of action designed to achieve redevelopment opportunities and facilitate regulatory procedures; and
- C Assessment and coordination of the Growth Management Study Commission recommendations and statutory changes emanating therefrom, in particular those dealing with intergovernmental coordination.