



FORT DE SOTO PARK
MAY 2012 NATURE WALK SCHEDULE

| | | |
|--------------|----------------|---------------------------------|
| 5/5/12 SAT. | CAMPGROUND | RHONDA |
| 5/6/12 SUN. | SOLDIERS' HOLE | LANA |
| 5/12/12 SAT. | MANGROVE | BONITA |
| 5/13/12 SUN. | ARROWHEAD | JUDI |
| 5/19/12 SAT. | BEACH | ROBBIE |
| 5/20/12 SUN. | <i>NO TOUR</i> | |
| 5/26/12 SAT. | <i>NO TOUR</i> | <i>MEMORIAL DAY WEEKEND</i> |
| 5/27/12 SUN. | <i>NO TOUR</i> | <i>MEMORIAL DAY WEEKEND</i> |

MAY 2012 NATURE WALK SCHEDULE

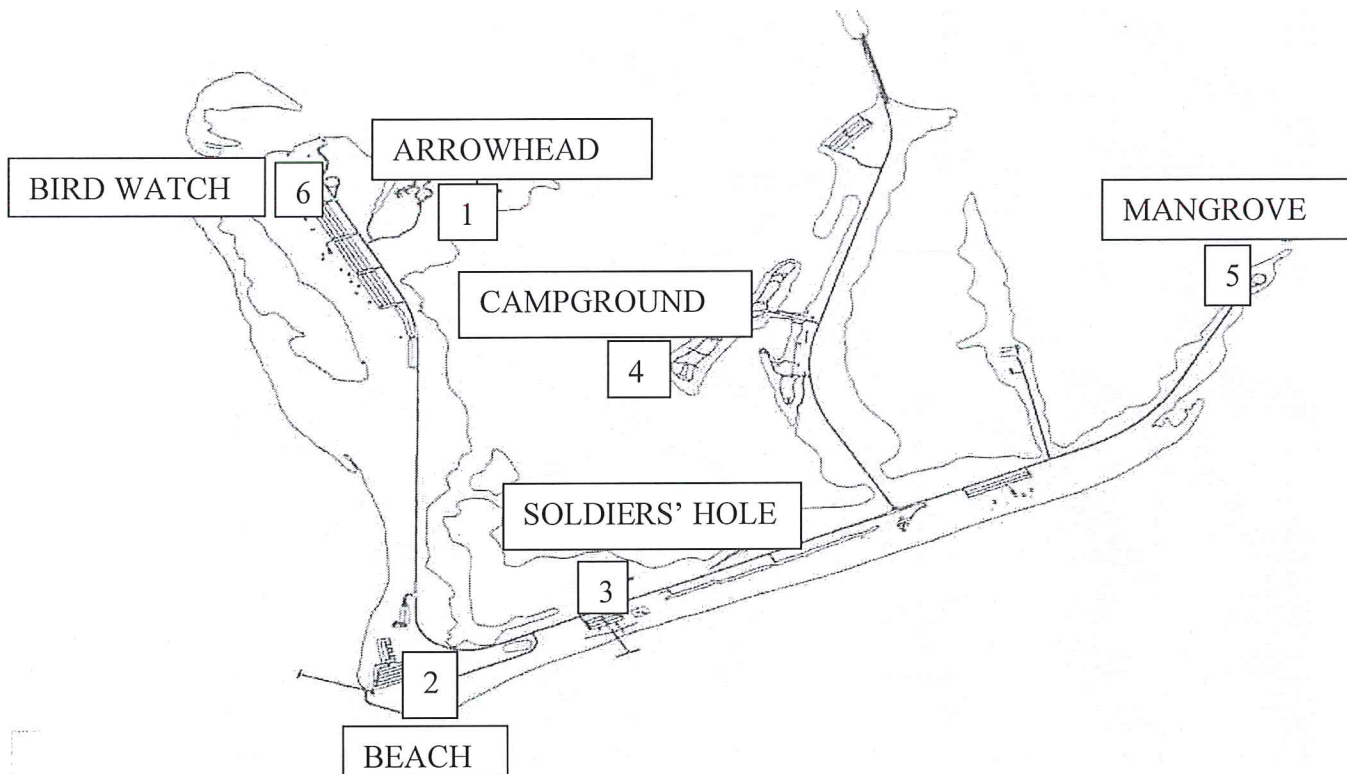
SATURDAYS & SUNDAYS - 10:00 A.M.

(SEE MAP FOR LOCATION)

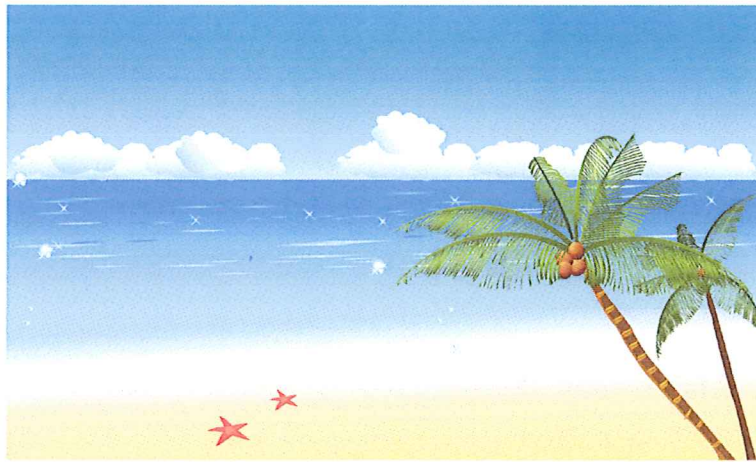
SIGN UP AT FORT DE SOTO PARK HEADQUARTERS (727/552-1862)

| | Sat 5/5 | Sun 5/6 | Sat 5/12 | Sun 5/13 | Sat 5/19 | Sun 5/20 <i>No Tour</i> | Sat 5/26 <i>No Tour</i> | Sun 5/27 <i>No Tour</i> |
|----------------|------------|------------|-------------|-------------|-------------|-------------------------------|-------------------------------|-------------------------------|
| ARROW HEAD | | | | X | | | | |
| MANGROVE | | | X | | | | | |
| CAMP GROUND | X | | | | | | | |
| BEACH | | | | | X | | | |
| SOLDIERS' HOLE | | X | | | | | | |
| BIRD WATCH | | | | | | | | |



FORT DE SOTO PARK



- 1 **ARROWHEAD** - Meet at trail head
- 2 **BEACH** - Meet at picnic shelter south of Fort
- 3 **SOLDIERS' HOLE** - Meet at dirt road, north side of highway between fishing pier entrances
- 4 **CAMPGROUND** - Meet at camp store
- 5 **MANGROVE** - Meet at east end of park
- 6 **BIRD WATCH** - Meet at the northern-most entrance to North Beach parking lot



FORT DE SOTO PARK JUNE 2012 NATURE WALK SCHEDULE

| | | |
|--------------|----------------|---|
| 6/2/12 SAT. | BEACH | RHONDA |
| 6/3/12 SUN. | ARROWHEAD | JUDI |
| 6/9/12 SAT. | MANGROVE | BONITA |
| 6/10/12 SUN. | SOLDIERS' HOLE | LANA |
| 6/16/12 SAT. | <i>NO TOUR</i> |  |
| 6/17/12 SUN. | <i>NO TOUR</i> |  |
| 6/23/12 SAT. | CAMPGROUND | RHONDA |
| 6/24/12 SUN. | BIRD TOUR | PAUL & GAIL |
| 6/30/12 SAT. | BEACH | ROBBIE |

Many thanks to all of our nature volunteers! Your efforts are greatly appreciated.
Enjoy your summer and we will see you in September. ☺

JUNE 2012 NATURE WALK SCHEDULE

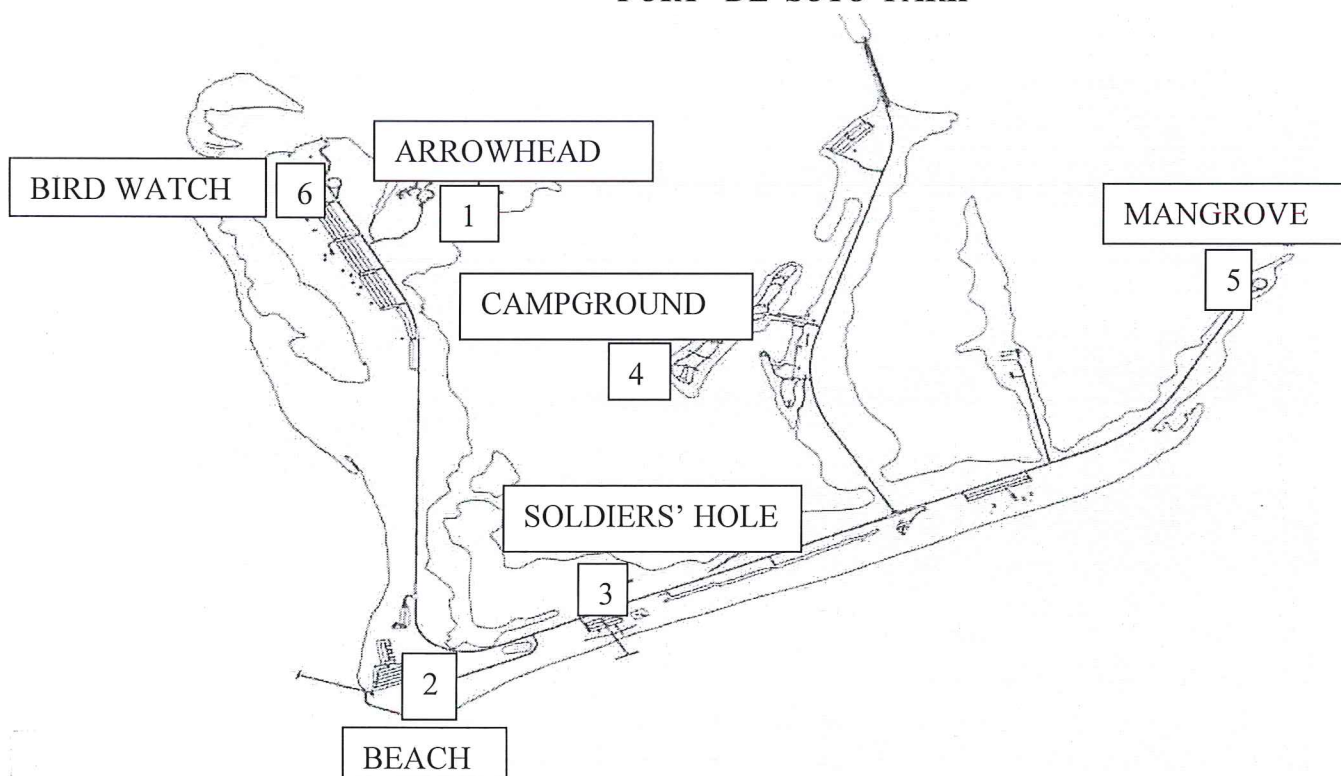
SATURDAYS & SUNDAYS - 10:00 A.M.

(SEE MAP FOR LOCATION)

SIGN UP AT FORT DE SOTO PARK HEADQUARTERS (727/552-1862)

| | Sat 6/2 | Sun 6/3 | Sat 6/9 | Sun 6/10 | Sat 6/16 <i>No Tour</i> | Sun 6/17 <i>No Tour</i> | Sat 6/23 | Sun 6/24 | Sat 6/30 |
|-------------------|------------|------------|------------|-------------|-------------------------------|-------------------------------|-------------|-------------|-------------|
| ARROW HEAD | | X | | | | | | | |
| MANGROVE | | | X | | | | | | |
| CAMP GROUND | | | | | | | X | | |
| BEACH | X | | | | | | | | X |
| SOLDIERS' HOLE | | | | X | | | | | |
| BIRD WATCH | | | | | | | | X | |

FORT DE SOTO PARK



- 1 ARROWHEAD - Meet at trail head
- 2 BEACH - Meet at picnic shelter south of Fort
- 3 SOLDIERS' HOLE - Meet at dirt road, north side of highway between fishing pier entrances
- 4 CAMPGROUND - Meet at camp store
- 5 MANGROVE - Meet at east end of park
- 6 BIRD WATCH - Meet at the northern-most entrance to North Beach parking lot