

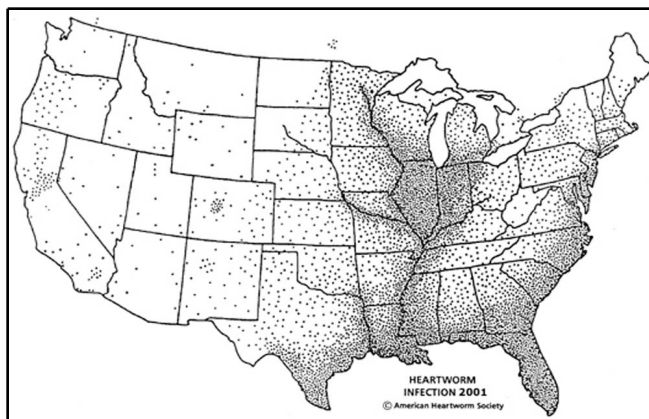
## Mosquito-borne Dog Heartworm Disease <sup>1</sup>

J. K. Nayar and C. Roxanne Rutledge<sup>2</sup>

Each year thousands of dogs become disabled or die from lung, heart or circulatory problems caused by heartworm disease. Heartworm disease in dogs and related canines is caused by a filarial nematode (a large thread-like round worm), *Dirofilaria immitis*. The adult worms live in the right side of the heart (right ventricle) and adjacent blood vessels (pulmonary arteries), and because of their location, are commonly called "dog heartworms."

### Distribution of Heartworm Disease

Heartworm disease occurs worldwide in tropical, subtropical, and some temperate regions. Until the late sixties, the disease was restricted to southern and eastern coastal regions of the United States. Now, however, cases have been reported from dogs native to all 50 states (Figure 1). For most of North America, the danger of infection is greatest during the summer when temperatures are favorable for mosquito breeding. In the southern U. S., especially the Gulf Coast and Florida, where mosquitoes are present year-round, the threat of heartworm disease is constant.



**Figure 1.** Distribution of Dog Heartworm in the United States. Credits: American Heartworm Society ([www.heartwormsociety.org](http://www.heartwormsociety.org))

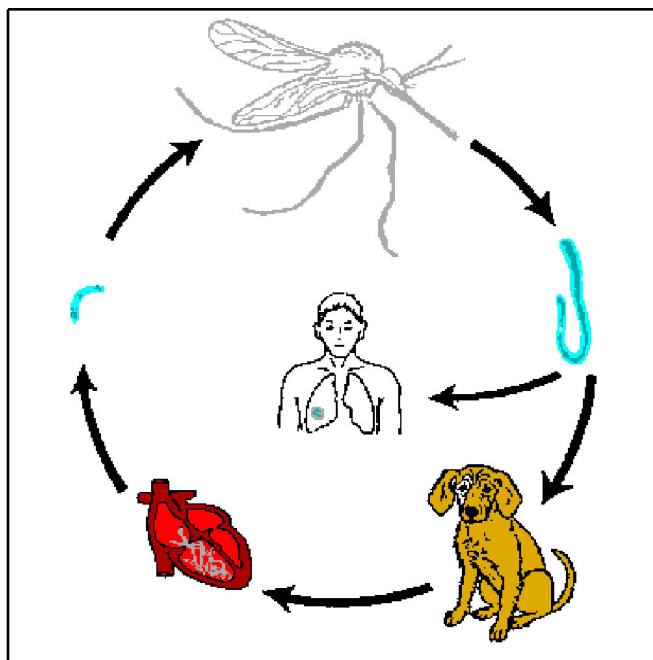
### The Heartworm Parasite

The complete development of the nematode parasite requires two hosts: dog and mosquito (Figure 2). In the dog, sexually mature adult nematodes are large (females up to 14 in. and males up to 7 in.) and cause disease by clogging the heart and major blood vessels leading from the heart. By clogging the main blood vessels, the blood supply to other organs of the body is reduced, particularly the lungs, liver and kidneys, leading to malfunction of these organs. Once infected a dog is infected for life. The sexually

1. This document is ENY-628, one of a series of the Entomology and Nematology Department, Florida Cooperative Extension Service, Institute of Food and Agricultural Sciences, University of Florida. Publication date: July 1990. Revised: July 1998. Major Revision: May 2005. Reviewed: May 2008. Please visit the EDIS Website at <http://edis.ifas.ufl.edu>.
2. J. K. Nayar and C. Roxanne Rutledge, Professor (retired) and associate professor, Florida Medical Entomology Laboratory, Cooperative Extension Service, Institute of Food and Agricultural Sciences, University of Florida, Vero Beach, FL 32962.

The Institute of Food and Agricultural Sciences (IFAS) is an Equal Opportunity Institution authorized to provide research, educational information and other services only to individuals and institutions that function with non-discrimination with respect to race, creed, color, religion, age, disability, sex, sexual orientation, marital status, national origin, political opinions or affiliations. U.S. Department of Agriculture, Cooperative Extension Service, University of Florida, IFAS, Florida A. & M. University Cooperative Extension Program, and Boards of County Commissioners Cooperating. Larry Arrington, Dean

mature nematodes discharge tiny (less than 1/800" long) immature worms called microfilariae into the blood stream of a dog. They do not develop further in the dog, but they can survive in the blood for up to three years. They must be ingested by a mosquito before they can progress further in their development. There are more microfilariae in the blood during the day than at night. Optimum numbers of microfilariae in the blood close to the skin coincide with times of peak feeding activity of mosquitoes. Microfilariae may also be more abundant in the summer when mosquitoes are abundant.



**Figure 2.** Life Cycle of Dog Heartworm. Credits: University of Florida

### Development In The Mosquito

Development of heartworm in the vector starts when microfilariae are ingested by the female mosquito during blood feeding on an infected dog. Microfilariae leave the midgut of the mosquito soon after ingestion and migrate into the Malpighian tubules cells (the mosquito kidney). At a temperature of about 27° C. the parasite becomes immobile, shortens and thickens, and develop into the so-called "sausage form" larva in about 4-5 days. This larval form is followed by the first stage larva and the first molt occurs in the Malpighian tubule cells at 8 days. During the second larval stage, the internal organs of the worms are formed. The second molt occurs at 11-12 days, resulting in third stage larvae which

resemble miniature adults. During the next 2-3 days, they increase in length, break out of the Malpighian tubules, migrate through the body to the head and accumulate in the mouthparts of the female. These third stage larvae are now called infective larvae. Thus, in 2-3 weeks, microfilariae transform into infective larva. Further development can only take place when mosquitoes feed on a dog.

Infective larvae are concentrated in the proboscis, or mouth parts of the mosquito. As the infected mosquito feeds on a dog, the infective larvae emerge from the tip of the proboscis and on to the skin of the animal. A drop of mosquito blood protects the larvae from drying prior to their entry into the host. The infective larvae penetrate the skin through the puncture wound that remains after the female mosquito withdraws her mouthparts.

### Development In The Dog

After penetrating the skin, the larvae stay close to the entry site and grow very little during the next few days. The molt from third- to fourth-stage larvae occurs 6-10 days after infection. Fourth-stage larvae migrate through subcutaneous tissue and muscle toward the upper abdomen and thoracic cavity. Fourth-stage larvae grow to about 1/10" in length during the next 40-60 days and then molt to the fifth and final larval stage, or young adults. The young adults penetrate veins to get into the blood stream and eventually, after 70-90 days in the dog, reach the heart. For unknown reasons, the percentage of infective third-stage larvae that reach maturity vary in different breeds of dogs.

Upon reaching the heart, the young adults continue to grow. Up to now there has been no evidence of disease in the dog. It is only after adult worms mate and start to discharge tiny motile microfilariae that circulate in the blood that disease becomes apparent. Microfilariae appear in the blood about 200 days after infection.

Visible signs of heartworm disease may not appear until a full year after being bitten by infected mosquitoes. In fact, the disease may be well advanced before the dog shows any symptoms. Dogs with typical heartworm disease fatigue easily, cough, and appear rough and not thriving. Blood and worms

from ruptured vessels may be coughed up. Blockage of major blood vessels can cause the animal to collapse suddenly and die within a few days.

Dogs with 50-100 mature worms exhibit moderate to severe heartworm disease. Dogs with 10-25 worms that receive little exercise may never show signs of heartworm disease, and one may not be able to find microfilariae in the blood. Heartworm infection without detectable microfilaremia is called occult dirofilariasis.

### Dog Heartworm Disease In Cats

Heartworm disease in cats is less frequent than in dogs. Cats are susceptible, but appear to be more resistant than dogs. The most prominent clinical signs are provided in Table 1. The average time from when the cats are infected through the bite of a mosquito until the presence of adult worms is about 8 months. Outdoor cats are at the greatest risk on infection; however, a high percentage of indoor cats (as defined by their owners) have been infected. The distribution of feline heartworm infection in the US is geographically similar to canine infection, but it occurs in fewer numbers than it does in dogs.

### Differences in heartworm infections in cats and dogs

Heartworm infection in dogs is common in the United States, but infection in cats is a relatively new concern. There are important differences in several aspects of heartworm infection dog and cat owners need to know. The following chart is modified from the American Heartworm Society's website (<http://www.heartwormsociety.org>) and highlights differences in all aspects of the disease in both groups of animals.

### Dog Heartworm Disease In Humans

Heartworm is also an occasional parasite of humans. The parasite is usually found in the lung (pulmonary dirofilariasis), and less often in the heart. Although the worm forms "coin lesion" in the lung, which may be confused with other diseases on x-rays, such as carcinoma, its clinical significance in man has not been fully determined. During the last 40 years

about 100 cases of human pulmonary dirofilariasis have been reported from Florida.

### Mosquito Vectors

Sixteen species of mosquitoes (*Aedes albopictus*, *Ae. vexans*, *Ochlerotatus canadensis*, *Oc. cantator*, *Oc. excrucians*, *Oc. sollicitans*, *Oc. sticticus*, *Oc. stimulans*, *Oc. taeniorhynchus*, *Anopheles bradleyi*, *An. punctipennis*, *An. quadrimaculatus*, *Culex nigripalpus*, *Cx. quinquefasciatus*, *Cx. salinarius* and *Psorophora ferox*) have been identified as natural hosts of *D. immitis* (Dog Heartworm) in the United States east of the Mississippi River. Among these, only 11 species are found in any abundance in Florida.

### Diagnosis

Diagnosis of canine heartworm infection depends on an accurate patient history, clinical signs, and use of several diagnostic procedures that may include detection of microfilariae in a blood sample, X-rays, or ultrasound.

It is much more difficult to diagnose feline heartworm infection than canine heartworm infection. Routine tests for the microfilariae are not useful in cats because the presence of heartworm offspring in the blood is temporary in cats. There are several tests used together for diagnosing heartworm in cats, including physical exam, ultrasound readings of the heart, complete blood count, blood testing, microfilaria testing, and in some cases, necropsy.

### Treatment, Prevention And Control

**Cats.** There are no products approved for feline heartworm treatment in the U.S. However, there are three products that have been approved as preventatives in cats: Heartgard®, Revolution®, and Interceptor®. Only a veterinarian can prescribe the appropriate product and dose. It is NOT the same for cats and dogs.

**Dogs.** The treatment for dogs is expensive and involves some risk to the animals. Much of the damage caused by heartworms occurs before there are any outward signs of the disease. An arsenical compound is used to kill adult heartworms in dogs; it is given as an intravenous injection and one or two

doses are given each day for two days followed by restriction of physical activity for one to two months. As the worms die they are carried by the bloodstream to the lungs. One dog in twenty may be expected to die as a result of complications from this therapy.

Prevention is the key element in protecting a dog. If a dog is already infected, the adult heartworms and the microfilariae must be eliminated before being put on a program to prevent reinfection. Preventatives include ivermectins: Heartgard®, Heartgard Plus®, Merial, Inverhart™ Plus, Virbac; milbemycin oxime: Interceptor®, Sentinel, Novartis; and selamectin: Revolution®, Pfizer. The preventatives will eliminate infective larvae before they reach the heart.

***Mosquito control.*** Mosquito control in residential areas where dogs and cats live can break the transmission cycle of heartworm disease. Dog owners should keep their animals out of mosquito infested areas. Living quarters should be mosquito-free. Dogs kept indoor usually show much lower incidence of infection.

**Table 1.** Clinical Signs Associated with Feline Heartworm Disease

<u>ACUTE</u>	<u>CHRONIC</u>
Collapse	Coughing
Dyspnea (Difficulty breathing)	Vomiting
Convulsions	Dyspnea
Diarrhea/Vomiting	Lethargy
Blindness	Anorexia
Tachycardia	Weight Loss
Syncope (Fainting)	Chylothorax
Sudden Death	

**Table 2.** Comparison of Heartworm Infection in Cats and Dogs

	<b>CATS</b>	<b>DOGS</b>
Parasite	<i>Dirofilaria immitis</i>	<i>Dirofilaria immitis</i>
Transmission	Mosquito Bite	Mosquito Bite
Susceptibility to infection	Lower than dogs; 61% - 90% of unprotected cats exposed to infective larvae become infected	Very high - virtually 100% of unprotected dogs exposed to infective larvae become infected
Longevity of worms	2-3 years	5-7 years
Number of worms	Usually less than 6; 1 - 2 worms most common	Not unusual to find more than 3
Organ with greatest pathology	Lungs	Heart and Lungs
Diagnosis	Complex	Relatively Simple
Treatment	None approved; High risk of complications	1 compound approved; complications manageable
Compounds for Prevention	3 approved in US	Several approved in US